

SUPERONE™

A Sun Healthy™ Innovation

1000

Introducing the world's most practical,
powerful and long-lasting
water tank filter and conditioner

IN THE NEWS...

"As water systems age, 63% of Americans are now concerned a 'great deal' about drinking water pollution...(this) has long been a top environmental concern for Americans — above air pollution and climate change." - Gallup Environmental Poll March 2017

"Our cities do their best to deliver water that meets or exceeds U.S. EPA standards. These standards include allowable levels of undesirable chlorine and chloramines. The Super One™ makes standard water superior!" - Luke Krcil, MS, Science Advisor



Superior Water for Home & Small Business with 'One Solution' from Sun Healthy Home™

- Enjoy pure fresh water for drinking, cooking and showering
- Harness the world's most innovative filter media and technology
- Installed at water point-of-entry to serve your entire home

SUPERONE™ VS Complexity

A Sun Healthy™ Innovation



SUPERONE™

Complexity

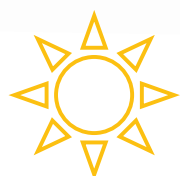


| | | |
|-----|-----------------|--------|
| Yes | Delicious Water | Yes/No |
| Yes | Performance | Yes/No |
| No | Replace Filters | Yes |
| No | Routine Cost | Yes |
| No | Maintenance | Yes |
| No | Confusing | Yes |
| No | Salt | Yes |
| Yes | 10-Year Life | No |
| Yes | Warranty | No |



- Used to create superior quality for municipal water meeting U.S. EPA standards
- Removes irritating chlorine, chloramines, impurities and odors
- Preserves the natural minerals in your water for taste and pH balance
- **Stage One:** Copper and zinc oxide for redox and bacteriostatic activity
- **Stage Two:** Long-lasting, high-capacity, activated catalytic carbon from coconut shells
- **Stage Three:** Copper and zinc oxide for redox, heavy-metal scavenging and bacteriostatic activity
- **Stage Four:** Silica quartz base
- **Stage Five:** NaturalSof™ anti-catalytic device to dissolve lime scale in plumbing and hot water heater to increase life and save energy

- Large size and capacity for superior contaminant removal and longevity
- Replace filter media every 7-10 years
- Backwashing control valve (BCV) requires a 120v power source
- BCV set to wash and re-bed media weekly
- Average Flow Rate: 1 - 4.5 GPM
- Peak Flow Rate: 9 GPM with NaturalSof™ NS1 (standard)
- Peak Flow Rate: 15 GPM with NaturalSof™ NS6 for larger households
- NaturalSof™ proven effective by U.S. GSA Green Proving Ground Program
- Required Water Pressure @ Point-of-Entry: Min 40 PSI/Max 75 PSI
- 14"width x 73" height | Weight: 210 lbs



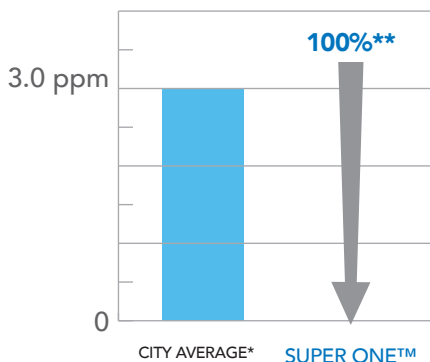
SUN
HEALTHY
HOME™

AIR & WATER INNOVATION

561.660.9255

info@sunhealthyhome.com
www.sunhealthyhome.com

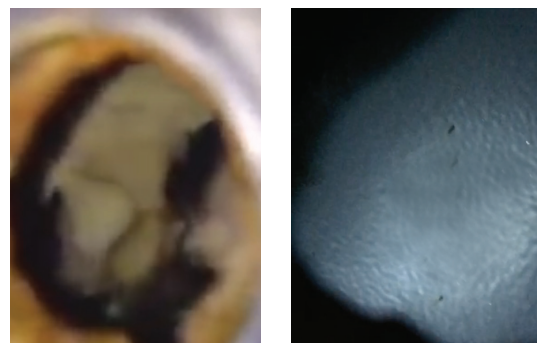
Chloramine Removal



* Range 0.6 - 4.5 ppm

** @ 4.5 GPM Flow Rate

Lime Scale Reduction



Before and after SuperOne™ installation